



Sagebrush Science Initiative:

An Example: Catalyzing Science Information, Tools & Partnerships

*Stephen Torbit Ph.D. & Kevin Doherty Ph.D.,
Science Applications Fish and Wildlife Service – Mountain Prairie Region*

Building Trust in Small Manageable Steps



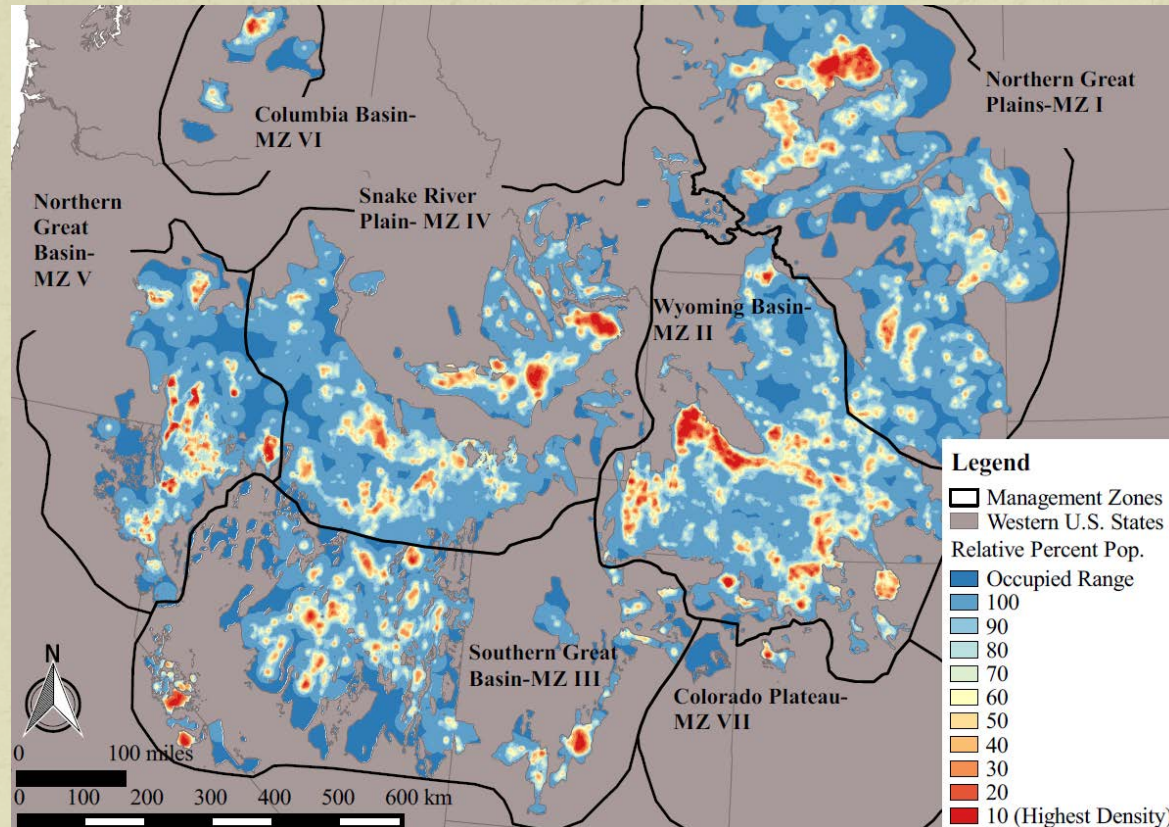
- Initial Focus on a Few Common Science Needs
- Mutual Interests in Science/Policy Decision Interface
- Leveraged Sage-grouse Expenditures & Lessons Learned

Common Science Needs



- LCC network supported \$1,000,000 in science/partner support
 - Success predicated on Partnership/Coop Agreement with States through WAFWA and USFWS Science Application Program
- New Science tools were of value to the broader partnership

Mutual Interests in Interface of Science/Policy



TRANSPARENCY:

*Data Sharing Agreements, Formal Review of Models,
Open and honest feedback*

Mutual Interests in Interface of Science/Policy



- Sagebrush Science Initiative Built on Trust
 - Original Science Needs and Coop Agreements
 - Collaboration on Science for Greater Sage-grouse Status Assessment
- Shared Vision

Science Initiative Vision



- Strong Partnerships, Delivering Conservation, Guided by Science
 - Transparency
- Document Effectiveness of Conservation Actions in Changing Trajectory of Ecosystem



Sagebrush Science Initiative

- WHO? Scientists and managers already working on sage-grouse and sagebrush conservation (Federal, State, Tribal and Private Scientists and Land Managers)
- WHAT?
 - The initiative is responsible for generating and delivering identified high priority science to coordinated resource management programs.
 - Efficiently and effectively share data layers, spatial analytical tools, habitat and wildlife management expertise.



Science Initiative Goals (WHY)

- Reduce redundancy and delay in providing science support tools to wildlife and habitat managers.
- Maintain conservation momentum, partnerships and catalyze conservation in the sage brush system that durable and sustainable.
- Leverage existing resources & work together to bring new resources (i.e. this is not new granting initiative)

Sagebrush Science Initiative Structure



Initial Vision and Funder – Catalyze Initiative

- Fish and Wildlife Service – Science Applications

Convener

- Western Association of Fish and Wildlife Agencies Sagebrush States (Through Coop Agreement with FWS)

Initiative Team

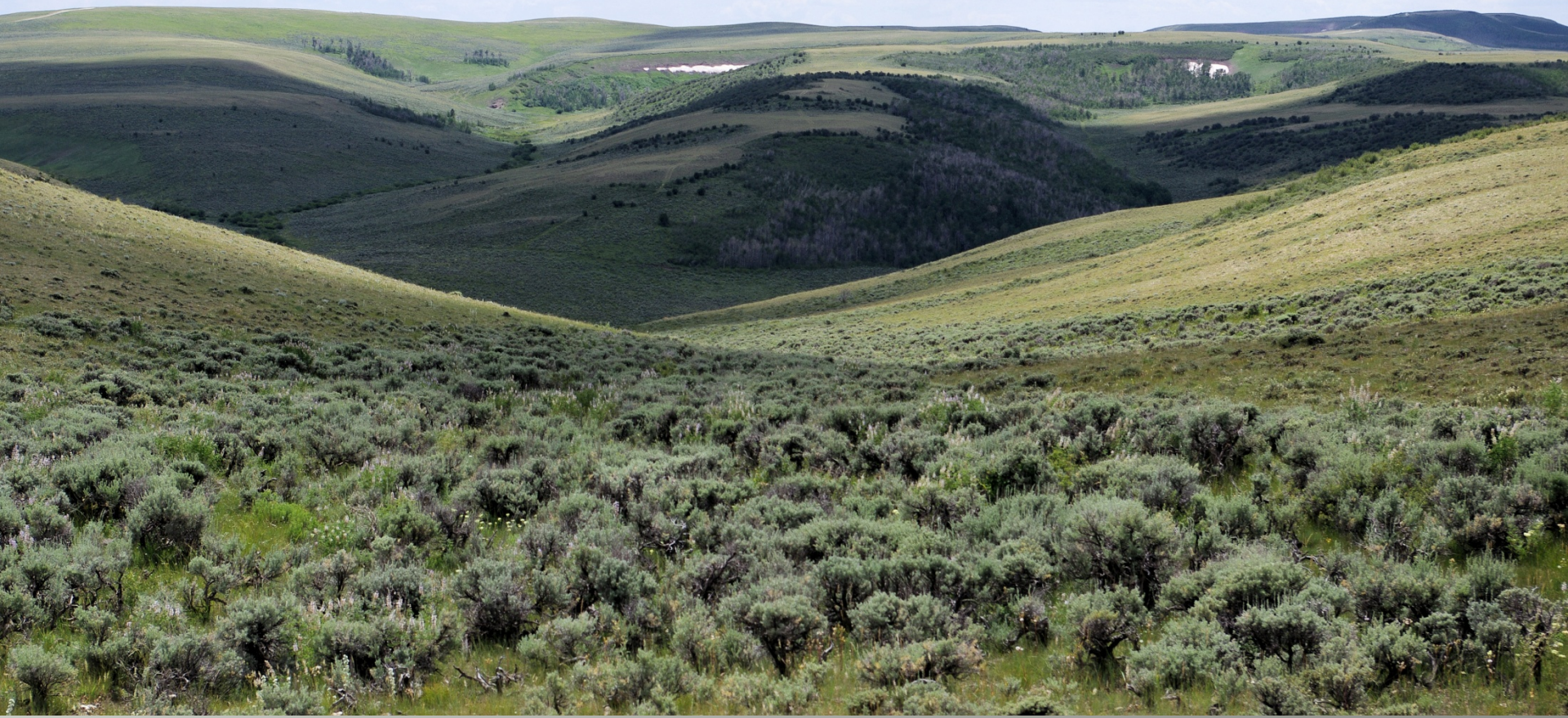
- WAFWA
- Fish and Wildlife Service
- Bureau of Land Management
- Forest Service
- USGS – Science Centers and Coop Units
- Inter-Mountain West Joint Venture
- Four Sagebrush LCCs
- Academic Experts
- Others

Sagebrush Science Initiative is More Than Capacity



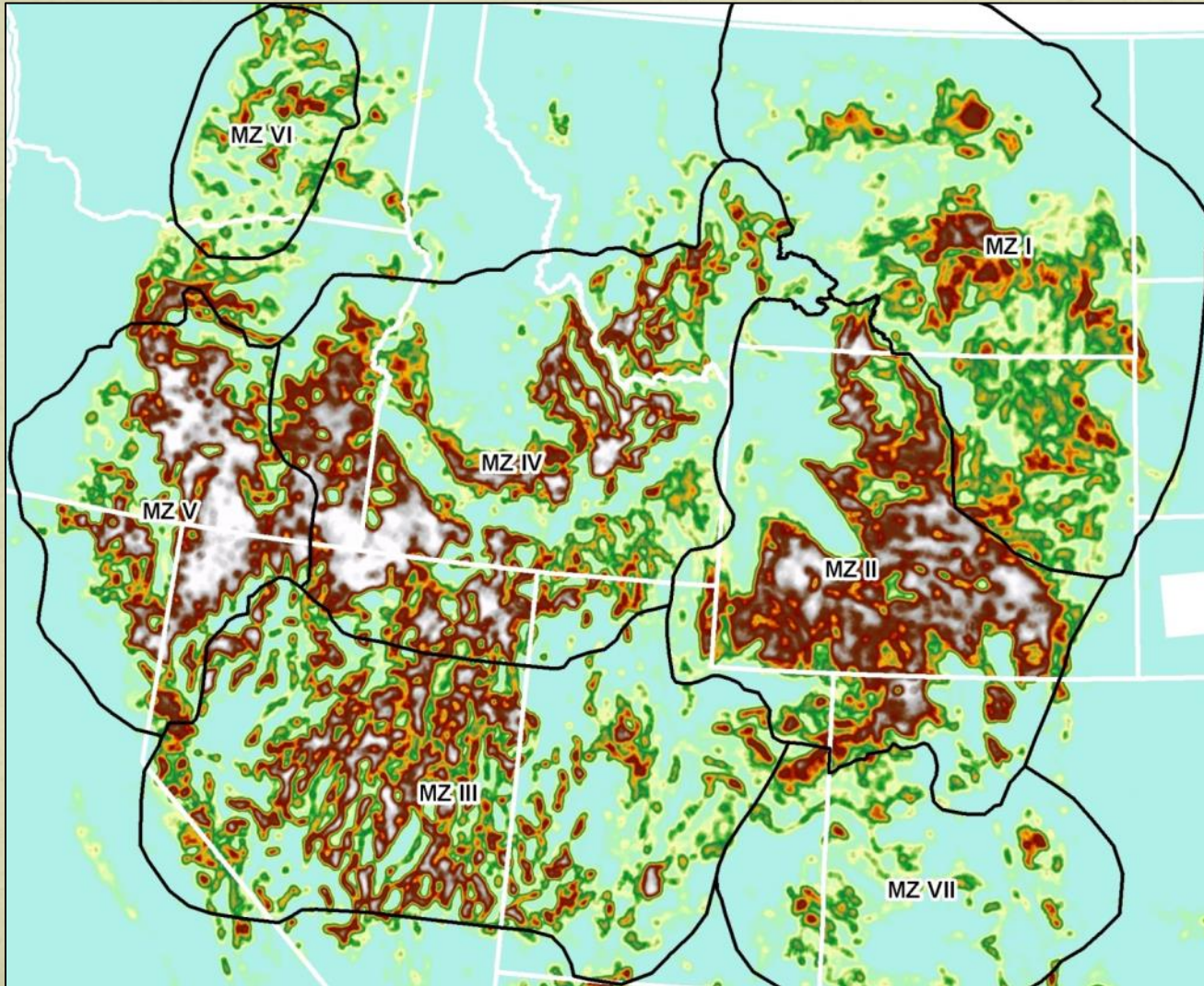
- Initiative model promotes efficiencies and integration of science efforts.
- Develop tools to be more strategic in conservation delivery across a landscape.
- Focus on win/wins.
 - **Recognize different agencies and orgs have different goals, but there is a lot of common ground.**
 - How can our products benefit multiple partners?

Leveraged Sage-grouse Expenditures For Other Species



- Example: Sagebrush Obligate Spatially Explicit Modeling

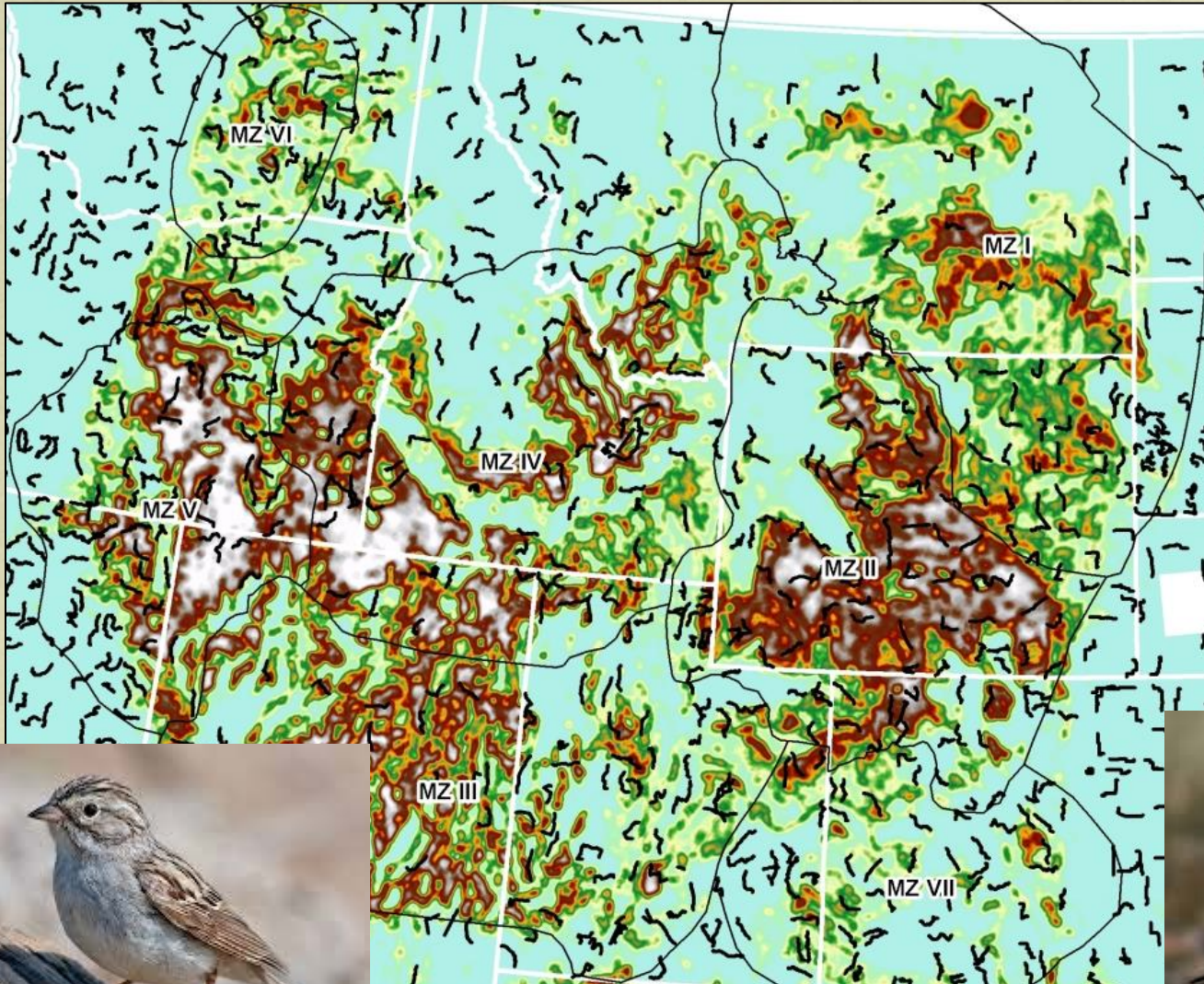
Landscape Level Conservation Tools for Sage-grouse Expanded to Sagebrush System



Sagebrush

Can Use Tools for Other Species

Sagebrush
&
Breeding
Bird
Survey
Routes
(BBS)



Sagebrush Science Initiative



Leverage Existing Work

Focus on High Quality Products

Work with Agencies to Ensure Uptake**

(Uptake is Vital and Often Neglected Component)**



Progress to Date

- Convened Expert Panel to Establish Species Priorities
- Enhanced Partnership with States, USGS, FWS, BLM and FS to Develop an Integrated Population Modeling Project
- House and Extend Fire and Invasives Science Needs Assessment from Secretarial Order
- Partnership Gathering Additional Investments

Questions & Discussion?

- Strong Partnerships, Delivering Conservation, Guided by Science
 - Transparency
- Document Effectiveness of Conservation Actions in Changing Trajectory of Ecosystem